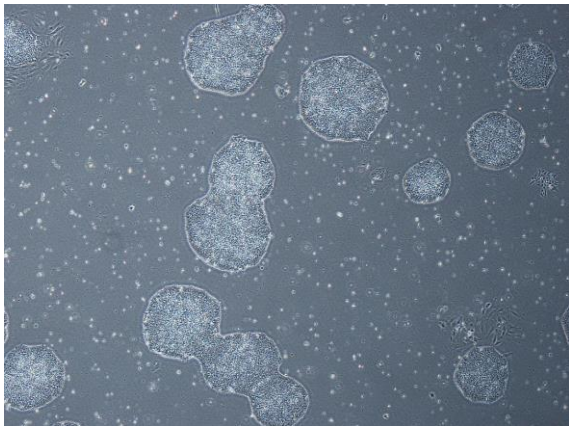
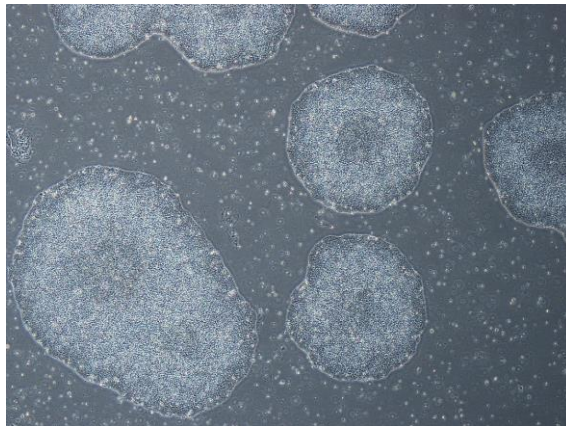


【 CiRA-j-1277 】 Morphology of iPSC colonies

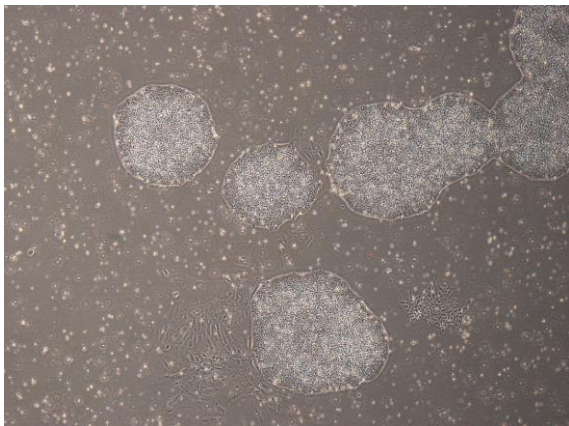
CiRA-j-1277-A: passage-2



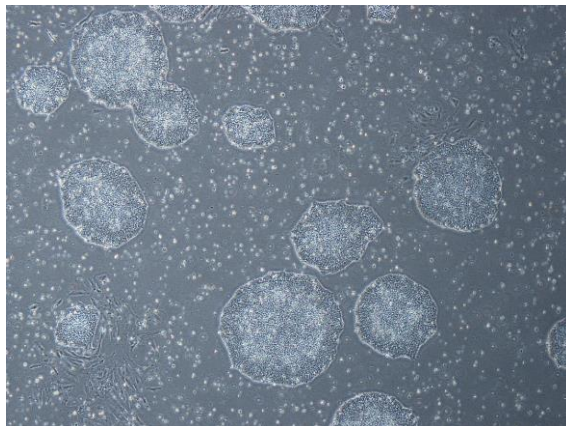
CiRA-j-1277-B: passage-2



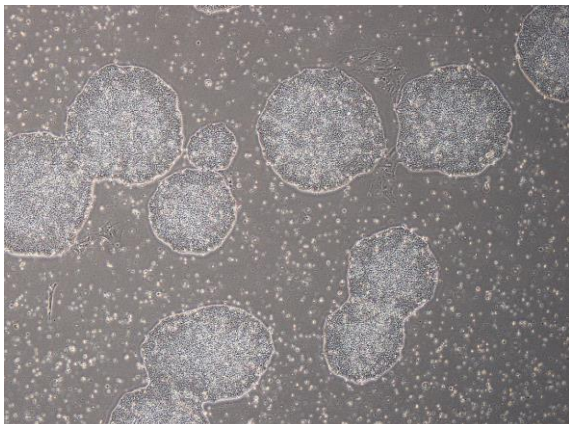
CiRA-j-1277-C: passage-2



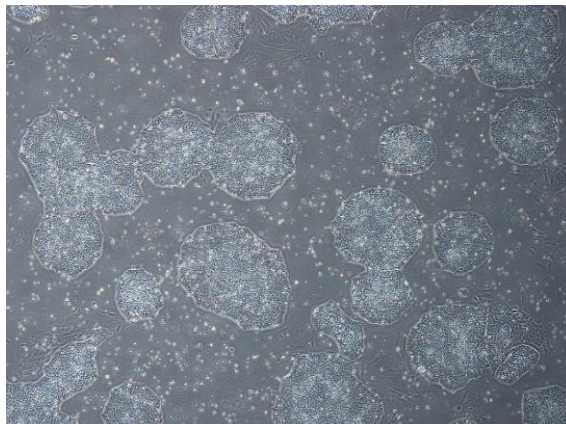
CiRA-j-1277-D: passage-2



CiRA-j-1277-E: passage-2



CiRA-j-1277-F: passage-2



(All images were captured at 4x magnification)